



QUALITY LIFTS™

Q4P14E-X: 14,000 lb. Capacity Service Mounted 4-Post



model#: Q4P14E

Surface mounted 4-Post

model#: Q4P14X

Surface mounted 4-Post

Extended Length Version



model#: Q4P14E

Surface Mounted 4-Post Lift

14,000 lb. lifting capacity

(shown with optional 6K capacity rolling jacks)

**POWDER
COAT
FINISH**

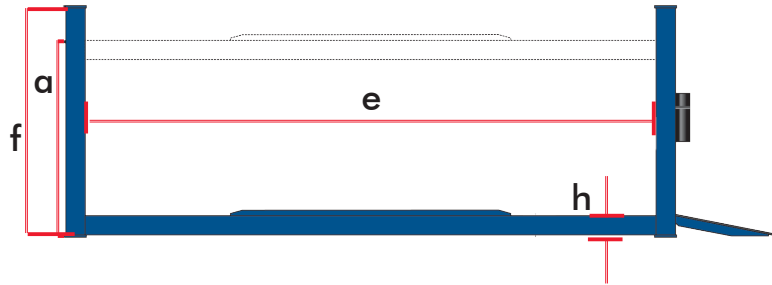
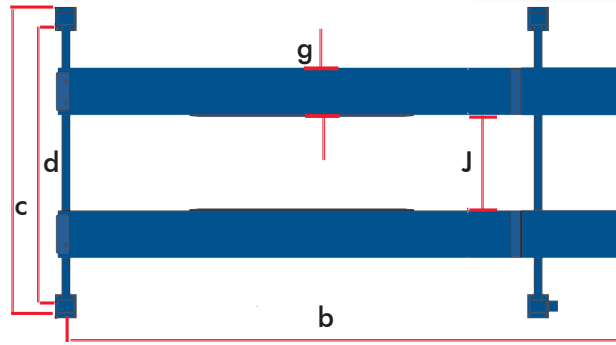
Features & Benefits:

- Rigidity and stability for rigorous servicing needs, achieved due to solid piece column construction.
- 14 level locking positions for a variety of service tasks.
- Oversized solid machined steel pulleys provides prolonged pulley and cable life.
- Adjustable runways accommodate a variety of tread widths, coupled with louvered approach ramps for positive vehicle traction.
- Optional bolt-on alignment kit converts general service application into an alignment rack.
- Hydraulic cylinder mounted underneath runway.
- Additional accessories available: Rolling jacks, oil drain pan

Model Number	4P14EFX	4P14XFX
Lifting Capacity	14,000 lb. (6350kg)	
Max. Wheelbase ¹	182 ¹ / ₂ " (4636mm)	210" (5334mm)
A Rise Height	78" (1981mm)	
B Length Overall	20' 5 ³ / ₄ " (6242mm)	22' 9 ¹ / ₄ " (6940mm)
C Width Overall	10' 10 ³ / ₄ " (3321mm)	
D Inside Columns	116" (2946mm)	
E Between Columns	196" (4978mm)	223 ¹ / ₂ " (5677mm)
F Height of Columns	90 ¹ / ₂ " (2299mm)	
G Width of Runways	20" (508mm)	
H Height of Runways	7 ¹ / ₄ " (184mm)	
I Width Between Runways (Min / Max)	40" / 43" (1016 / 1092mm)	
Air Supply Required	90-120 psi	
Motor	2HP	
Voltage (1 Phase Std.) ²	208-230 Volt	
Speed of Rise	75 Sec.	
Minimum Recommended Bay Size	12' x 24' (3658mm x 7315mm)	12' x 26' (3568mm x 7925mm)



Q4P14: 14K lb. Service Mounted 4-Post

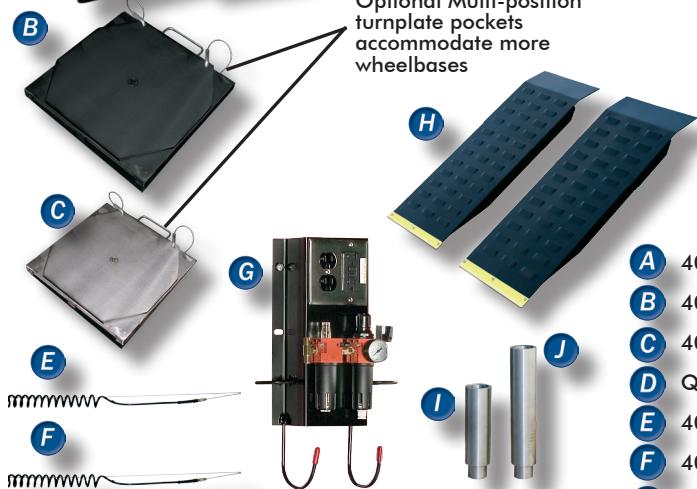


Optional Accessories

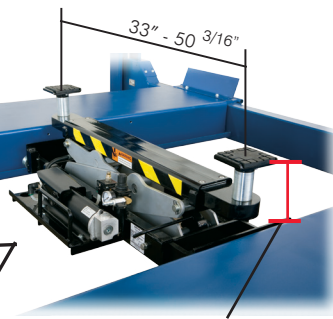
Optional Bolt-on Alignment Kit



Optional Multi-position turnplate pockets accommodate more wheelbases



Standard adjustable runways for general service



Optional 7,500 lb. capacity Rolling Jacks

- A** 40200-3DBK - Bolt-on alignment kit for Q4P14E/Q4P14X (shown with turnplates)
- B** 40200-3DBK - Black turnplate option (standard) on alignment kit
- C** 40200-3DSS - Stainless Steel turnplate option (upgrade)
- D** QRJ7.5 - 6,000 lb. capacity rolling jack for Q4P14E/Q4P14X
- E** 40230-E - Internal Airline Kit for Dual Rolling Jack operation for Q4P14E
- F** 40230-X - Internal Airline Kit for Dual Rolling Jack operation for Q4P14X
- G** B10264 - Air/electric workstation with filter/lubricator/regulator
- H** 10266-L - Optional Ramp kit - 48" long for drive through option and/or low profile vehicles (fits Q4P14E/Q4P14X)
- I** 10355-6 - 6" Adapter for QRJ7.5
- J** 10355-9 - 6" Adapter for QRJ7.5

For more information, contact your Authorized Quality Lifts Distributor:



DOOR SYSTEMS LLC
(866) 561-DOOR
www.kjkdoors.com



QUALITY LIFTS
200 Cabel Street
Louisville, Kentucky 40206

Phone Toll-Free: 877-771-5438
www.qualitylifts.com

Quality Lifts reserves the right to make changes to specifications without notice and without making changes retroactive. Unloading, installation and oil not included.

Lit#Q4P14_02-15 ©2015, Quality Lifts, LLC